



Workshop on Impact-based Forecast and Warning Services (Islamabad, Pakistan, 21-23 November 2019)

Service Delivery and Gaps

Azeema Ahmed

Contents

- Services we provide to users.
- Main users of meteorological services
- Channels of communication used in providing services
- Methods use to engage users
- Actions taken since the Workshop in Sri Lanka (Dec 2018).
- Challenges and limitations in service delivery

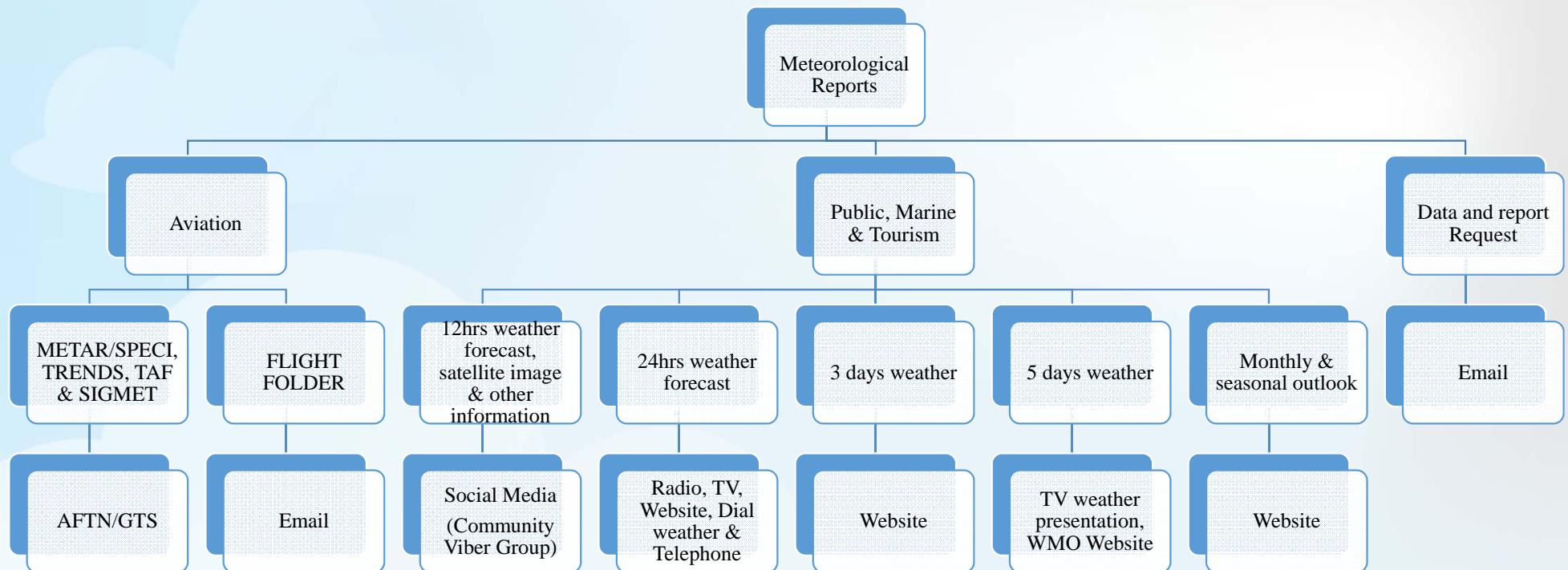
Services provide to users

- Monitor weather and issue weather forecasts, advisories/warnings for the safety and protection of life and property.
- Issue and make available of seasonal climate outlook and monthly rainfall outlook
- Issue climate reports
- Monitor seismic activities and issue advisories/warnings
- Provide Aeronautical Meteorological Services for national and international air navigation.
- Contribute emergency operations in events of natural disasters.
- Provide quality meteorological data for sustainable National socio-economic development

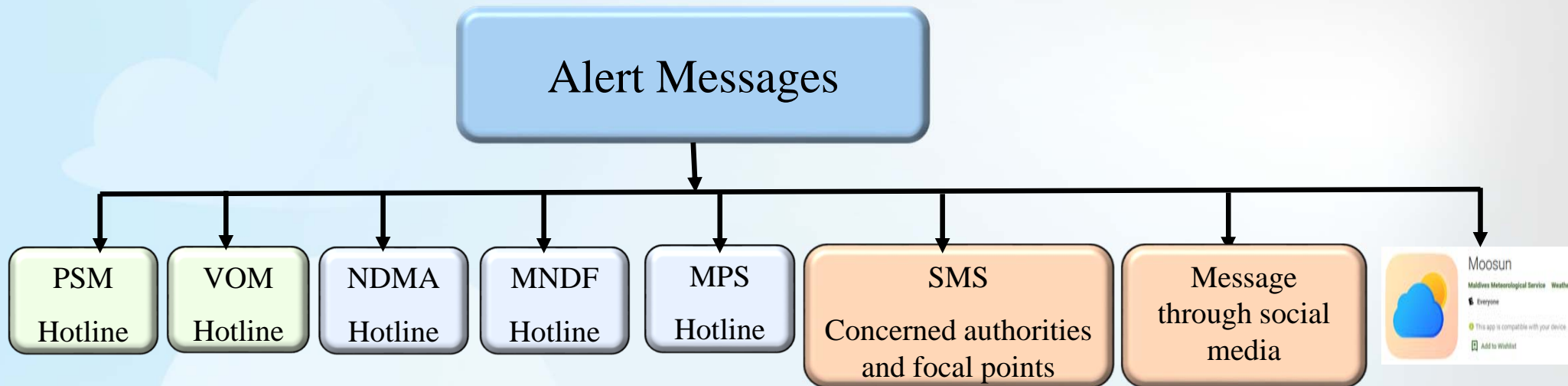
Main users of meteorological services

- General public
- Aviation sector
- Sea farriers & fishermen
- Tourism sector
- Agriculture
- Health sector

Channels of communication used in providing services



Channels of communication used in providing services



Thresholds & Levels & warning(s)

Level 1 (White)

- Mean wind prevailed or observed at 22 -27 mph and rough seas associated with wind
- Rainfall of 30 mm expected in 1 hr or 50 mm in 6 hours
- Continuous moderate TS observed for 3 hours
- Few (2-3 waves) swell surge during high tide times
- RSMC declare TC center in the box within Lat S5-N12, Lon E66-E81

Level 2 (Yellow)

- Mean wind is prevailed or expected between 28 – 35 mph and rough seas associated with high winds
- 40 mm rainfall expected in 1 hr or 70 mm rainfall expected in 6 hours
- Continuous moderate TS observed with high frequency
- Tropical Cyclone track towards Maldives and expected to cross Maldives in the next 24 hours
- Series of surge waves with less frequency lasting for 3 hours

Level 3 (Orange)

- Mean wind is prevailed or expected between 36 – 42 mph and rough seas associated with high winds
- 55 mm rainfall expected in 1 hour or 90 mm rainfall expected in 24 hours
- Continuous severe TS lasting for 3 hours
- TC track towards Maldives and expected to cross within the next 12 hours
- Series of tidal waves with high frequency lasting for 1 hour

Level 3 (Red)

- Mean Wind speed of 42 mph or more is prevailing or expected and rough seas associated with winds
- Torrential rain of 70 mm in 1 hour or 150 mm expected within 6 hours.
- Continuous severe TS with very high frequency observed
- TC track towards Maldives and expected to cross within the next 06 hours
- Series of high waves with high frequency lasting for 2 hours or more

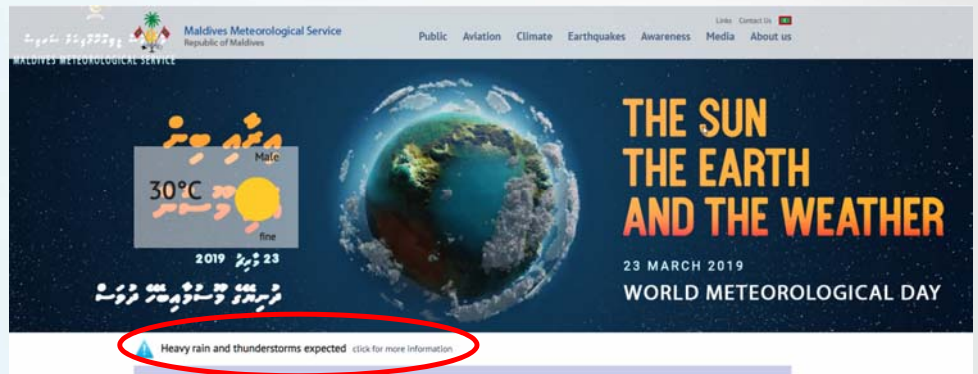
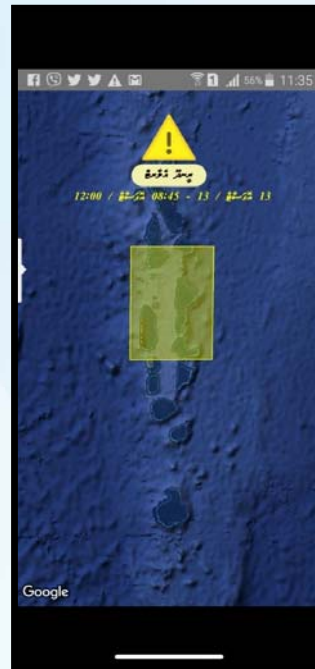


Channels of communication used in providing services

ދިވެހިރާއްޖޭގެ ސަރުކާރު
Maldives Meteorological Service

ދިވެހިރާއްޖޭގެ ސަރުކާރު
ދިވެހިރާއްޖޭގެ ސަރުކާރު
ދިވެހިރާއްޖޭގެ ސަރުކާރު
ދިވެހިރާއްޖޭގެ ސަރުކާރު
ދިވެހިރާއްޖޭގެ ސަރުކާރު
ދިވެހިރާއްޖޭގެ ސަރުކާރު
ދިވެހިރާއްޖޭގެ ސަރުކާރު
ދިވެހިރާއްޖޭގެ ސަރުކާރު

ALERT YELLOW
ADVISORY: Torrential rain with thunderstorms.
Area: From Raa Atoll to Meemu Atoll.
Period: 1045 hrs – 1400 hrs
18 October 2019



Thursday 2:54 PM

ALERT WHITE INFORMATION:
Heavy rain and thunderstorms.
Area: From Haa Alifu Atoll to Laamu Atoll.
Period: 1500 hrs - 1900 hrs.
ISSUED: 1450 hrs 07 November 2019.
-MetService-

Methods to engage users

- Telephone
- Awareness programs
- Meetings
- Surveys

Actions taken since the Workshop in Sri Lanka (Dec 2018)

- A mobile app has been developed with CAP features
- Alerts are in compliance with CAP and now in the process of generating a CAP feed and internal testing.
- TV weather presentation has been upgraded and relevant training requirements are met.
- Some flood prone islands are identified (Foahmulah, Kulhuduffushi, N.Holhudhoo, Male‘).
- NWP training has been conducted for WRF model through RIMES.
- Terminology awareness program has been conducted for general public.
- A new city ‘Hanimaadhoo’ has been added to the WWIS network

Challenges and limitations in service delivery

- Need to improve communication within stakeholder to develop a Likelihood-Impact Matrix
- Need more constructive methods of disseminating weather related news with news agency's
- More public awareness programs need to be conducted
- Nowcasting system has to be improved
- Risk hazard map has to be developed through extensive surveying methods.



Thank you