

## Report from CBS Lead Centres for GCOS – JMA

### 1 Performances of GSN stations in JMA’s responsible area.

JMA is in charge of CBSLC in East Asia and Southeast Asia. JMA’s responsible area covers Brunei, Cambodia, China, Japan, Laos, Malaysia, Mongolia, Myanmar, Philippines, Republic of Korea, Singapore, Thailand and Viet Nam.

Table 1 shows the performance of GNS stations in JMA’s responsible area using the method proposed by CBS GCOS Lead Center (Chile) for RA III at the meeting of the CBSLC-4. The indices over 90% are China, Japan, Malaysia, Mongolia, the Philippines and Republic of Korea.

There are two stations in Viet Nam, and one of them, TAN SON HOA (48900), is an aeronautical station operated by the airport association. As a result, it was impossible for Viet Nam to submit the CLIMAT report, and the index in Viet Nam was low. The station was deleted from GSN station list in January 2014 by the request of the PR of Viet Nam.

The reason why the index in Myanmar was 0.7 is attributed that Myanmar began to submit the CLIMAT reports after long term silence in March 2013.

Table 1. Performance of GSN stations in 2013

Country	number of stations	CA <sup>1</sup>	CC	CT	CR	Index
China	32	1.0	1.0	1.0	0.8	0.95
Japan	13	1.0	1.0	1.0	1.0	1.00
Malaysia	6	1.0	1.0	1.0	1.0	1.00
Mongolia	10	1.0	1.0	1.0	0.8	0.95
Myanmar	3	0.7	0.7	0.8	0.7	0.73
Philippines	6	1.0	0.9	1.0	1.0	0.98
Republic of Korea	3	1.0	1.0	1.0	1.0	1.00
Thailand	6	0.9	0.8	0.9	0.8	0.85
Viet Nam	2	0.5	0.3	0.5	0.5	0.45

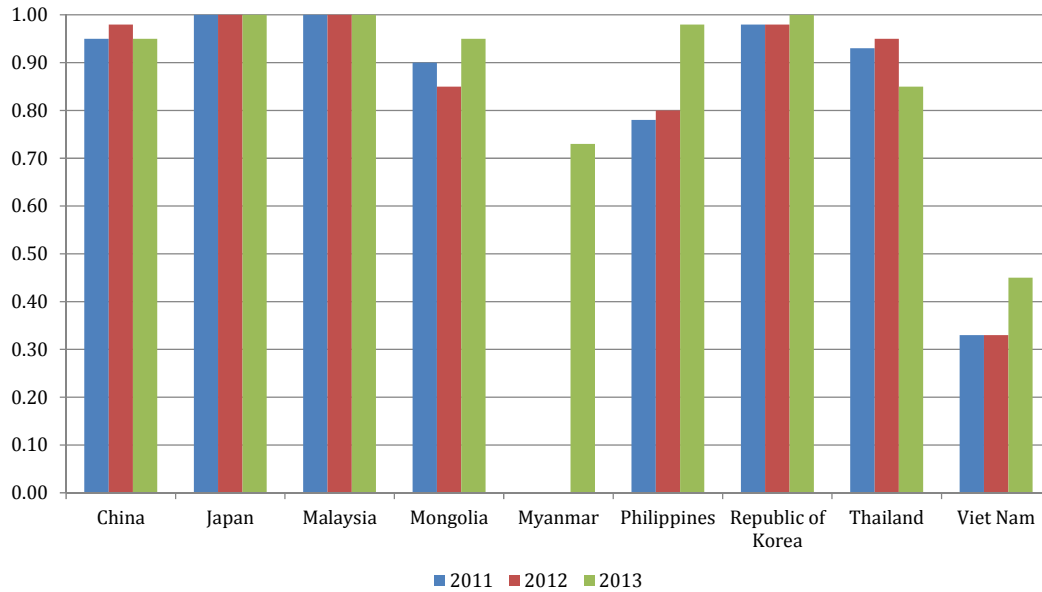
\* Quality control for temperature and precipitation does not finish from July to December 2013.

Figure 1 shows the performance of GSN stations for three years in JMA’s responsible area. The indices were over 90% except for three countries. The performance in the Philippines and Viet Nam in 2013 became better than that of 2012 and 2011, although the index of Viet Nam was low due to the station of 48900.

Figure 2 shows the time series of the performance for three years in JMA’s responsible area. It shows that the performance was exceeding 0.9 and slightly improved for three years.

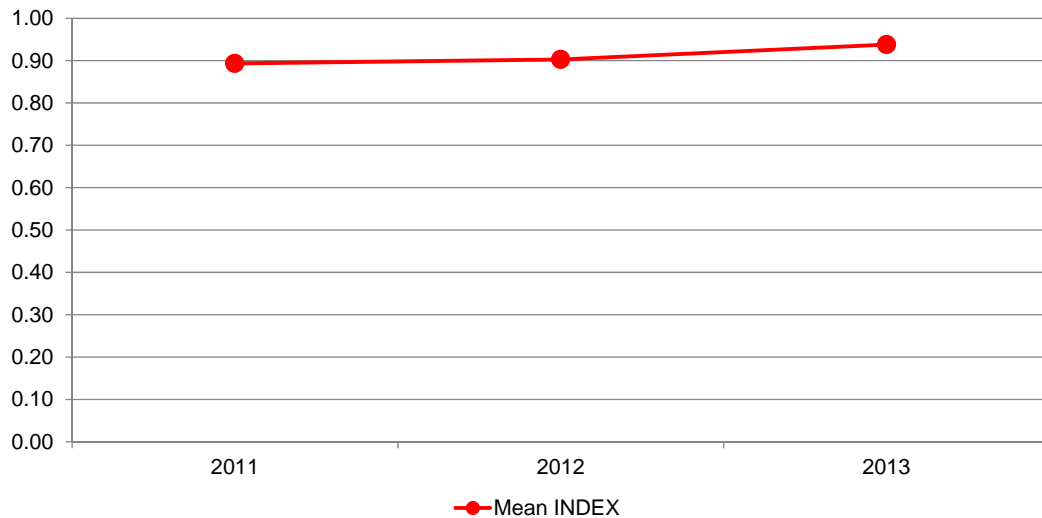
---

<sup>1</sup> Please refer to the document from CBS GCOS Lead Center (Chile) at the CBS LEAD CENTRES FOR GCOS COORDINATION MEETING - Fourth SESSION.  
[http://www.wmo.int/pages/prog/www/OSY/Meetings/CBS-GCOS-LC\\_Santiago2013/Doc5\\_DMC\\_Chile.doc](http://www.wmo.int/pages/prog/www/OSY/Meetings/CBS-GCOS-LC_Santiago2013/Doc5_DMC_Chile.doc)



**Figure 1 Performance of GSN stations for three years**

The values were based on the GSN stations list in each year.



**Figure 2 Time series of the performance for three years**

The values were based on the GSN stations list in each year.

## 2 Activities of JMA as CBSLC in 2013

### 2.1 Myanmar

JMA received an email from the Focal Point for GCOS in Myanmar on 1<sup>st</sup> January 2013 regarding the re-start of the CLIMAT reports, although Myanmar had not sent the CLIMAT reports for a long time. JMA contacted a responsible staff member for the CLIMAT reports through email, and gave technical advice on the CLIMAT reports. As a result, Myanmar sends the CLIMAT reports every month via email from March 2013.

## **2.2 10-day CLIMAT from Mongolia**

Mongolia sent the 10-day (not monthly) data by the same format as the CLIMAT reports. As the data might confuse other NMHSs in climate monitoring, JMA had contacted a staff member of Mongolia since 2011.

In 2012, JMA advised the staff member again that the header of the 10-day bulletin should be changed in order to distinguish the 10-day data bulletin from the CLIMAT bulletin.

As a result, JMA received an email on 11 December 2012 saying that the Mongolia stopped using the header “CSMO” for 10-day (not monthly) data and changed the header to “VSMO”.

After that, JMA received the 10-day data from Mongolia till March 2013 but since then JMA has not received them except for the data as of 13 August.

## **2.3 RBCN station in Cambodia**

JMA has received the daily data of PHNOM-PENH/POCHENTONG via email every a few months from a staff member of Cambodia. JMA has forwarded the reports to the GSN Monitoring Center in Germany and the World Data Center for Meteorology in USA after encoding them in the format of CLIMAT reports.

## **2.4 Training**

Some staff members of NMHSs are invited to the Group Training Course for Reinforcement of Meteorological Services (\*) at JMA every year. In the training course of 2013, JMA gave training on the CLIMAT report and lecture about the activities of CBS Lead Centre for GCOS to seven participants.

\* The course is organized by the Japan International Cooperation Agency (JICA) and JMA.

## **3 Activities for WWR**

JMA accepted acting as regional coordinating centre for the collection of the WWR as a CBS Lead Centre in RA II in 2013. JMA contributed to the collection of the WWR, and the number of NMHSs that JMA received was 10 (about 30%) in 2013.

Kazuyoshi Yoshimatsu  
Global Environment and Marine Department  
Climate Prediction Division  
Japan Meteorological Agency  
1-3-4 Otemachi, Chiyoda-ku  
Tokyo 100-8122  
Japan