

Data Policy, GBON and SOFF

Pre-Congress Briefing for RA-II and RA-V

Michel Jean

President, Infrastructure Commission

Dr Anthony Rea

Director, Infrastructure Department



WMO OMM

World Meteorological Organization

Organisation météorologique mondiale

Session Outline

Doc. 4.1 - WMO Unified Data Policy: process, key decisions, expected impact (Sue Barrel, Chair of Study Group and Lars Peter Riishojgaard, Deputy Director Infrastructure)

- *Interactive discussion facilitated by Anthony Rea (Secretariat)*

Doc 5.2 - GBON current status, key decisions, expected impact, future development (Stefan Klink, Chair of Study Group and Lars Peter Riishojgaard)

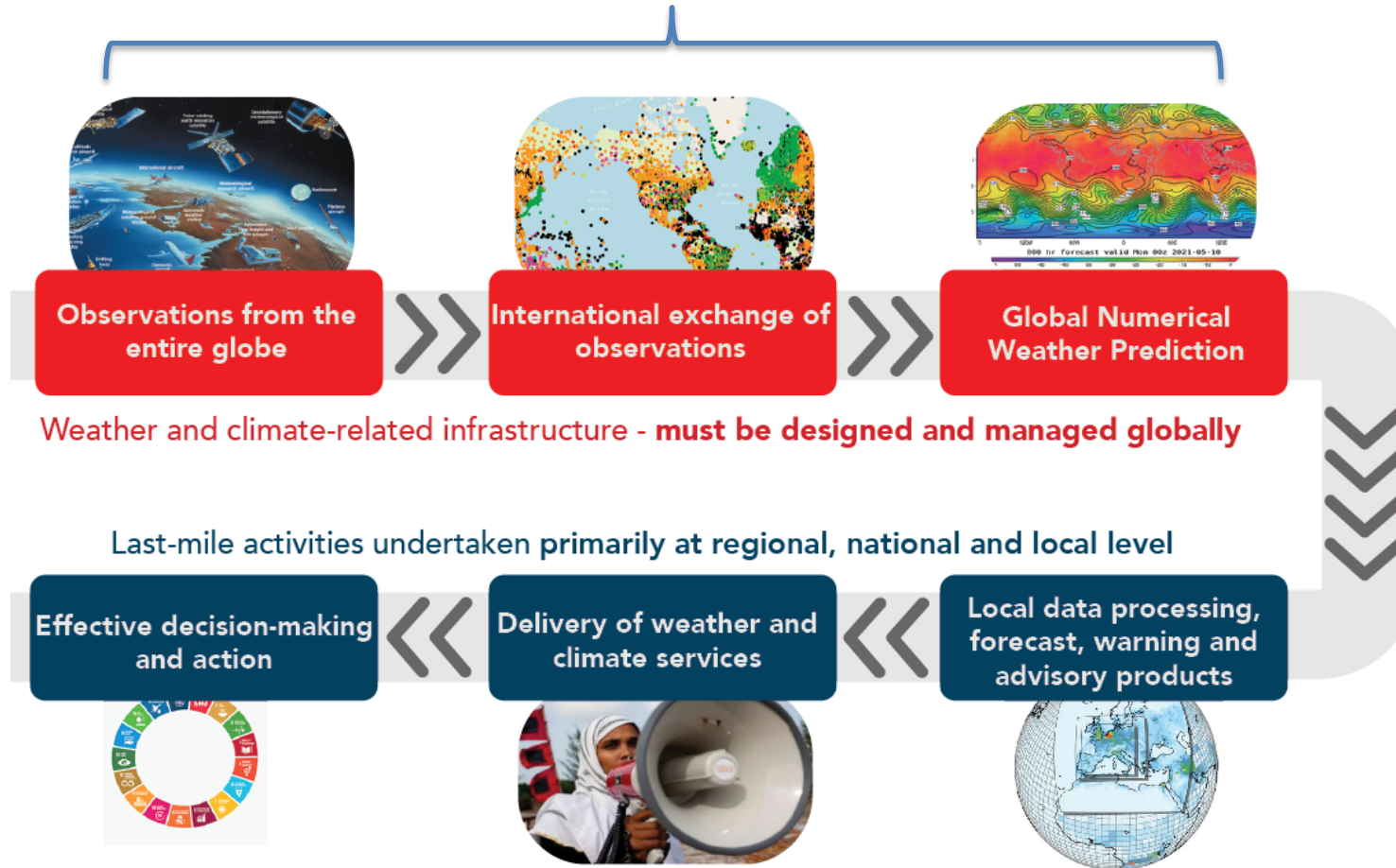
- *Interactive discussion facilitated by Anthony Rea (Secretariat)*

Doc 4.2 - SOFF support to GBON (Anthony Rea and Markus Repnik, Director Development Partnerships)

- *Interactive discussion facilitated by Anthony Rea (Secretariat)*

The Value Chain

Infrastructure

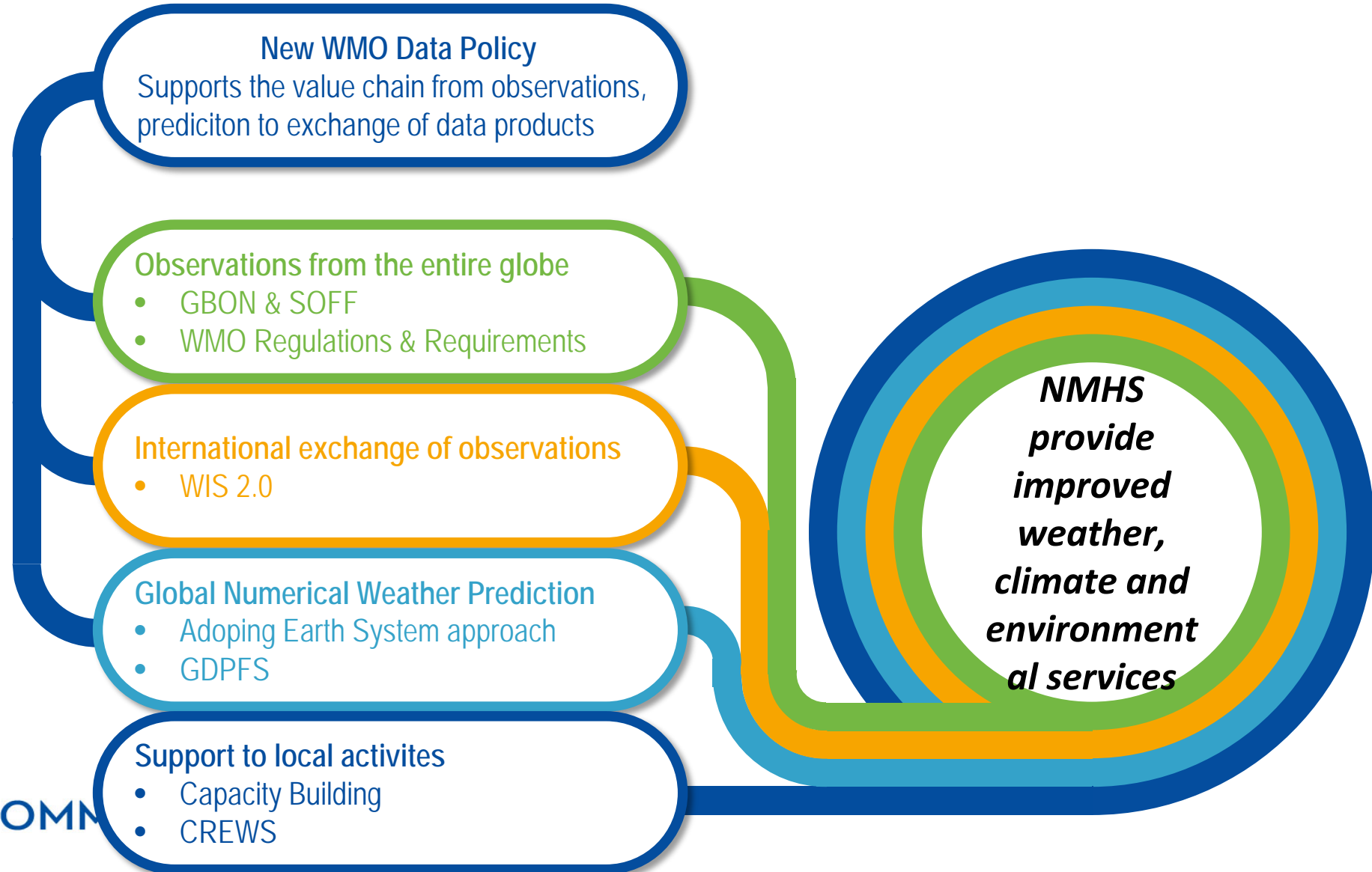


Successful delivery and use of weather and climate services depends on all elements in the value chain working properly

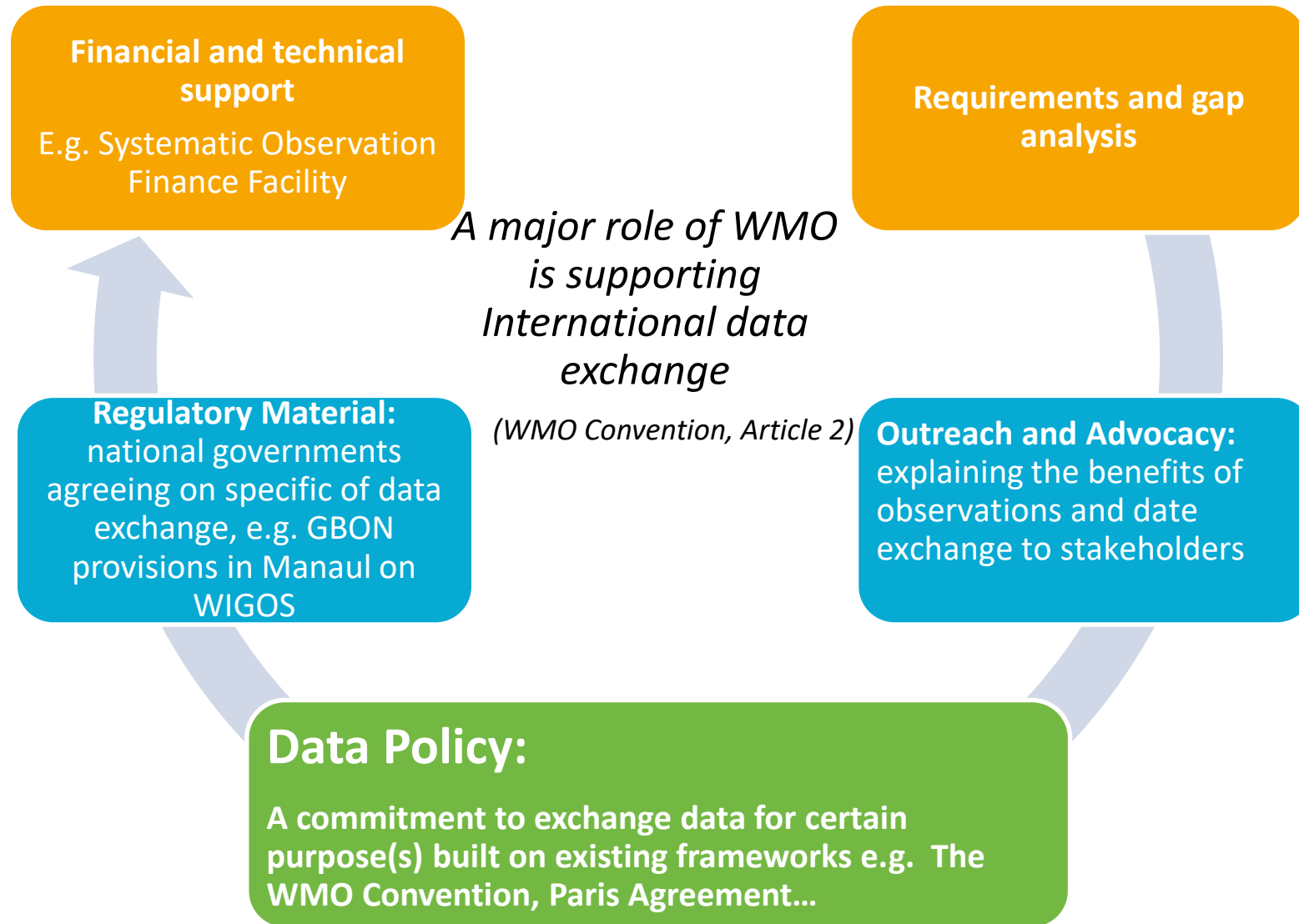


Achieving WMO's vision for the future

Improvements are needed to all parts of the value chain from observations to service delivery.



Five essential ingredients for successful data exchange





WMO OMM

**World Meteorological Organization
Organisation météorologique mondiale**

Thank You
[Merci](#)

Michel Jean
President, Infrastructure Commission
prezcois@gmail.com

Dr Anthony Rea, Director, Infrastructure Department,
World Meteorological Organization
area@wmo.int